

## LA48 – Linear Actuator – Specification Sheet

**the LA48 by CTW Automation - (4) Motor (8) Inches of travel**

***the LA Series of Linear Actuators by CTW Automation***



***when you need more than a sine wave....***

### LA48 - Key Specifications

- Fully Electric – Magnetic linear actuator for instant on motion and force
- Usable stroke range of 8+ inches / 200+ mm
- Peak force of 4,200 lbf. & 18.7kN
  - 4,000 lbf. out to 98 in/sec & 2.50 Met/sec
  - 2,329 lbf. to 157 in/sec & 4.0 Met/sec
  - 475 lbf. to 216 in/sec & 5.50 Met/sec
- Peak Velocity of 220 in/sec & 5.60 Met/sec
- Acceleration of 120+ G's peak & 30 G's continuous
- Frequency response above 200 Hz
- Optimized motion for cooler and quieter operation
- Sine, Sine-on-Sine, Square, Triangle, Split Velocity and track data and more
- Input power 208-240 VAC III phase – 80 A(i)



The **LA Series** of actuators by CTW Automation is the ultimate in high performance linear motion that puts wave form creation and the resulting data collection at your fingertips; quickly, easily and in a repeatable fashion. While sine waves are standard, the LA allows for “any wave form” drive profiles allowing you to attain a better view into your testing world. From square, to triangle, sine on sine, frequency sweeps and stepped input; this platform lets you do it all. And because of the actuation methodology, coupled to the advanced motion controller, motion will be as requested and at a lower operating temperature and lower audible level.

### **Standard System Features:**

#### Sensors and signals:

**Displacement, Force and Temperature** (via an infrared non-contacting sensor) are standard. **Velocity** is derived from Displacement giving (4) channels to be used in viewing the resulting data.

- Force / load is measure via Interface 5K Pancake design to ensure accurate and repeatable results with low noise rejection.
- Displacement comes from analog encoder of 1 nanometer resolution mounted to the actuator to deliver a true reading of motion in the vertical axis.
- Temperature is mounted on an easy to move, CTW custom quick clamp allowing the User to test any damper at a constant point helping to improve consistency in comparing dampers and changes.

#### Stroke:

The LA48 has a useable range of 8.00 inches & 200 mm as the maximum available movement is more thus allowing for a very usable stroke as well as additional travel outside the range.

#### Velocity:

The LA48 peak velocity is 236 in/sec & 6.0 Met/sec. Owners should expect a very useful 5.50 Met/sec peak operating velocity with minimal displacement error within a given force range.

#### Acceleration:

Due to extreme design considerations in moving mass the acceleration performance far exceeds the industry norms. Over 120G's can be achieved for peak while a constant 30 G's is usable for testing. The frequency response is well over 200 Hz at less than 3dB down.

#### Waveforms:

Wave forms include, but not limited to, Sine, Square, Triangle, Sine-on-Sine, Stepped and Pause function as well as Split-Velocity for separating compression and extension speeds. There will also be the potential for drive files to be imported so that you can replay displacement data from a track or event as well as white noise and other frequency generating wave forms.



### Software:

By using a GUI based on Windows 10 application platform, you are ready to build your own Test sequences via command-based prompts that allow you to go from nothing to 200 Hz in a few moments. In standard configuration, the User has a wide variety of canned wave forms, logging and prompts to develop specific Tests for every given damper or test specimen.

- See website for additional information on software

### Columns:

Columns are 2.00" diameter and standard length provides a test opening of 48" / 1220 mm from the end of the load cell stud to the top of the actuator. Longer columns can be purchased in additional 12" / 300 mm increments.

### Power input:

The LA48 requires 208-240VAC III phase power of up to 80 A(i). Outside of North America, it is best to use a step-down transformer to go from 380/440 VAC III phase to the 240 VAC III. Power and controls are fed to the LA via a control cabinet interface.

\* Note – for peak performance, three phase (III) – 80 Amps (i) and a high buss voltage up to 240 VAC should be supplied.

### Training:

Training can be done on site or at Lexington facility. If CTW must travel, additional charges will result. Understand that the machine is done and ready when it leaves our dock so that it is possible to train in our facility knowing the machine will be easy to get running on site.

### Support:

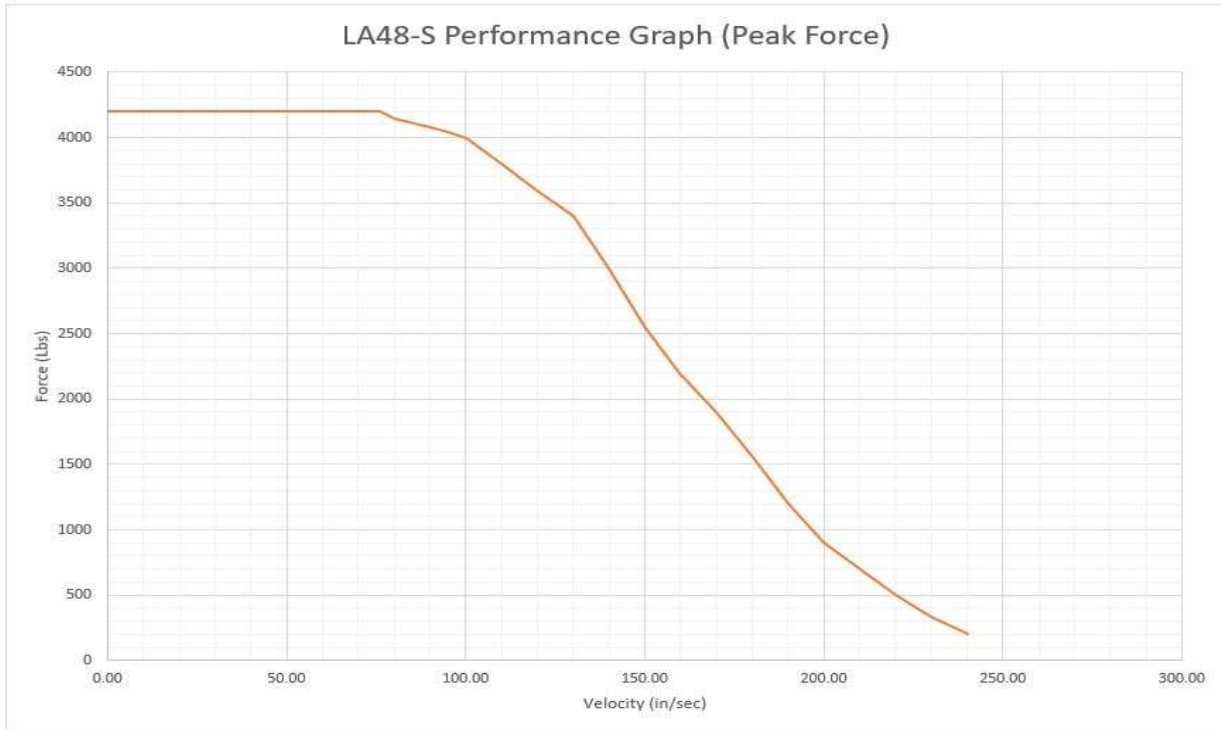
The LA48 comes with a 1 -Year phone and e-mail support contract as well as use of TeamViewer remote access ability for training and help. We want you to have every opportunity to use and get the most from the machine.

### Warranty:

The LA48 comes with a 1 -Year limited warranty on any item based on failure outside of user misuse.

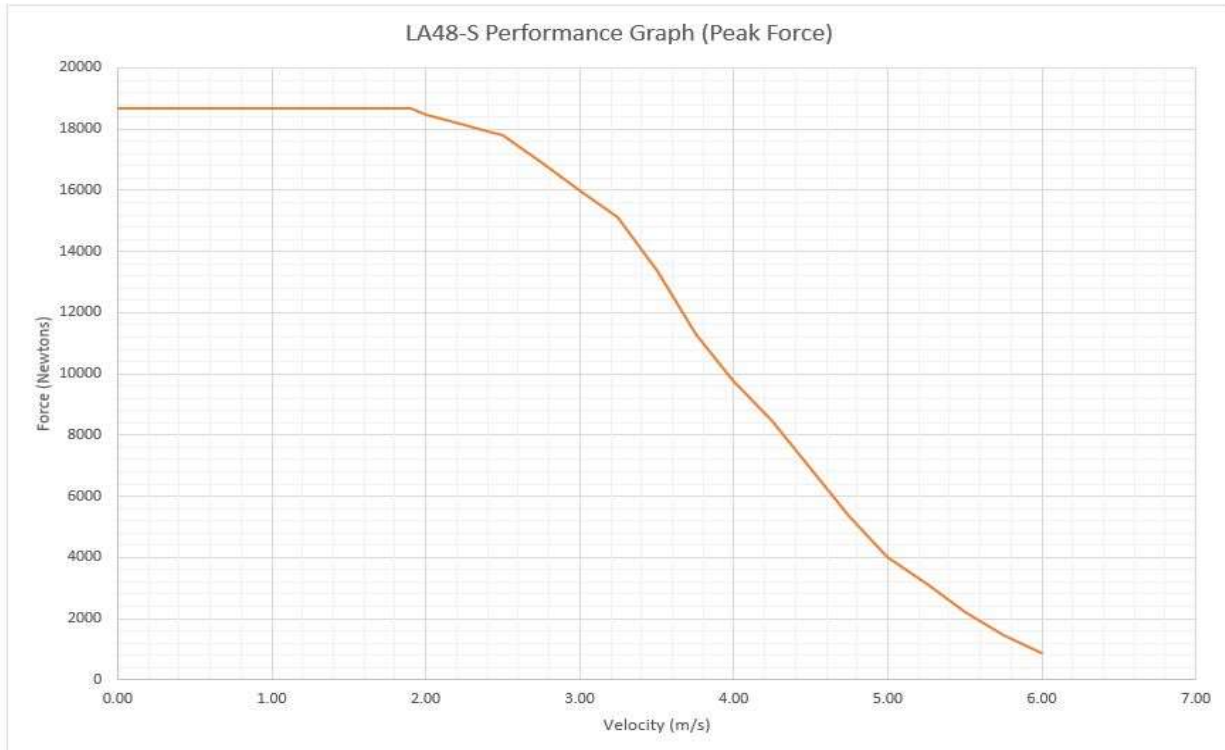
### Delivery:

- Customer can opt to pick-up in Lexington, NC but then NC State tax applies
- Crate – (1)
- Shipping – to be determined
  - By ground transport in Continental US
  - International air freight shipping is preferred
  - If machine goes by ocean freight and additional charge will be accessed for salt exposure protection



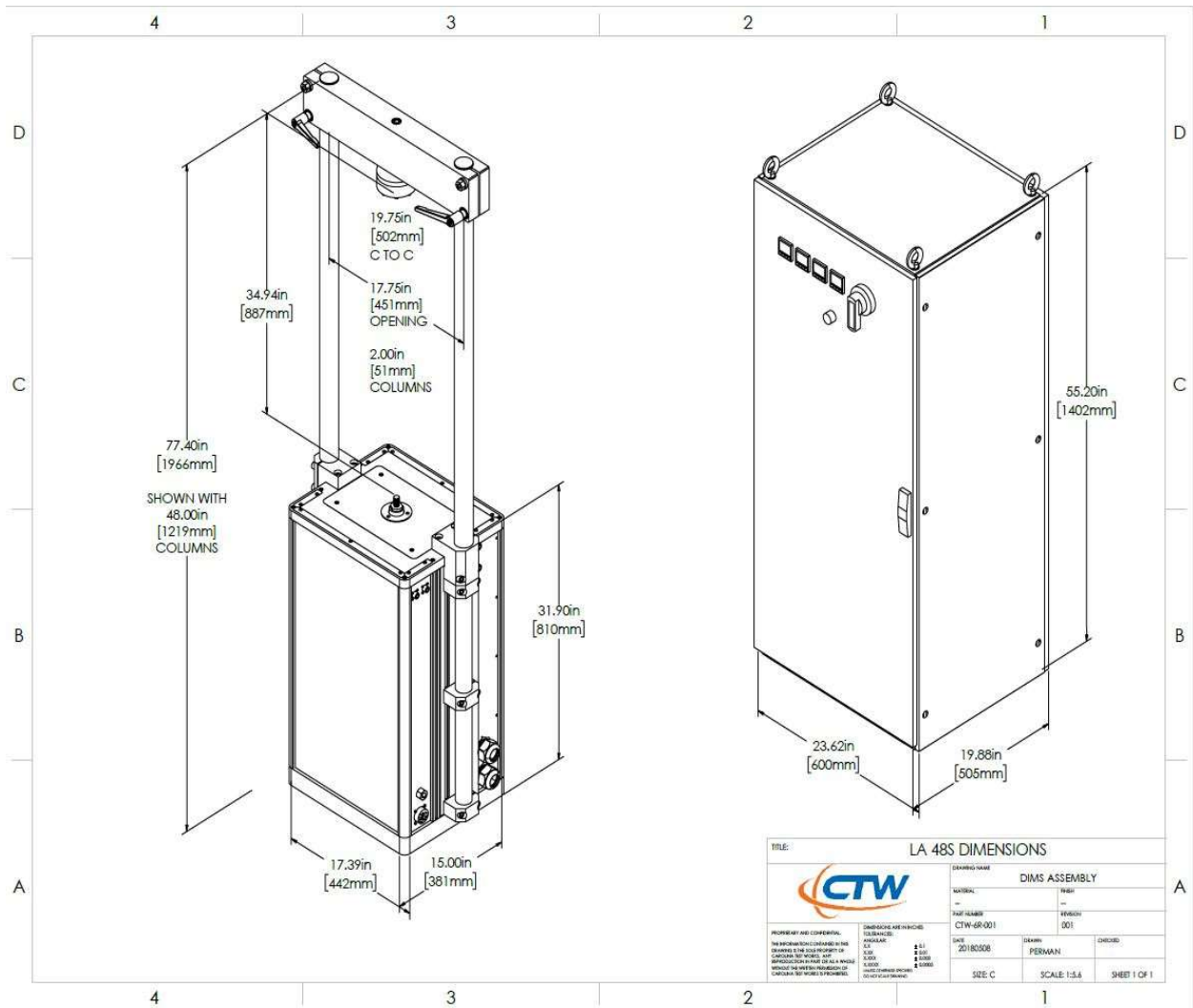
\*Performance curve created using Max input voltage and current supply with dampers. Results may vary on load/mass and other damper specific properties.

### LA 48 Peak Power and Performance Curve – Imperial units



\*Performance curve created using Max input voltage and current supply with dampers. Results may vary on load/mass and other damper specific properties.

### LA 48 Peak Power and Performance Curve – Metric units



General Dimensional Outline of LA48